

Village Times

KERIKERI
RETIREMENT
Village



PAGE 1 | MARCH 2017

Welcome... TO OUR NEWSLETTER

Hilary Sumpter - Chief Executive

After an amazing summer it's suddenly autumn, my favourite season of the year. The time has gone so quickly and I've had a number of comments that Seal, my Labrador, hasn't been to work much this year. That's because she is keeping our new puppy, Turtle, company at home. Once Turtle has learnt a few more social cues she'll be coming to work with Seal. In the meantime she's affectionately known as 'Turtle the Terrorist'...

Speaking of the future, planning for building on our new sites is continuing and I hope to be able to consult with our residents about the development in April.

Meanwhile I am in awe of our amazing volunteers. Without them our resident's lives would not be so rich and our staff wouldn't be able to do all they do. Thank you doesn't cut it, but please know that you are valued and appreciated by us all. Special thanks to Penelope Spencer who has taken over from Adona Cox as our Volunteer Coordinator!

Something else that's equally important to ensuring that life is enjoyable, is the way we stimulate and engage our residents with Dementia.

They have a wide variety of hobbies, experiences and memories and we need additional resources to engage their specific areas of interest. Later this year we'll be organising a fundraiser, with the money raised going towards an extended range of resources as recommended by our Diversional Therapy team.

In the interim I thought I'd see if anyone is willing to donate some of the smaller items on the list - used is fine. The items we're after include:

- 3 Ukeleles x 3
- Music CDs, suitable to sing along to
- DVDs in Te Reo
- iPads
- A camera for our residents to use
- Books & reading material for blokes – for example Barry Crump, boating and fishing magazines.
- A fixed chalkboard for our Tui wing

We're delighted to thank Hunting and Fishing who have already donated a Swiss ball.

If you can help with any of the above please contact our Operations Support Manager, Cheryl Silich.

On Reaching 100 FRANCES SHAW INTERVIEWED NELL GRAVESON

Nell Graveson has been living in the village for over 30 years. In January she turned 100. She celebrated with friends and family from as far afield as London, Melbourne and Dunedin.

So how does it feel reaching 100?

It doesn't feel much different, except I'm getting a bit wobbly on my legs.

What's your secret?

Sheer luck! I had a happy childhood, I never smoked, and never drank much. My only medication is a glass of pinot gris!

How did you celebrate your birthday?

I had three events. The first was a special happy hour on the Friday with residents of the Village and friends. On the day itself we booked out the local Thai restaurant

at Waipapa and had a lovely feast and a beautiful cake of a box of icing flowers. The great grandchildren ate the flowers. On the third day we had a garden party at a property down Wharau Road by the beach with a marquee for family and friends. I had a wonderful time although I was a bit tired at the end of it all! It was so special to see so much of my family all at once.

What words of wisdom have you got for us?

If you want to be loved, you need to be loveable. If you want to have friends, you need to be a friend.

Welcome to



▲ Hanna Manser.



▲ Gillian and Graham French.



Meet Sarah

Sarah Barker is our new Receptionist and she manages the front desk from 8.30am-12.30pm on weekdays.

Sarah loves meeting people and previous frontline experience includes working in early childcare and retail.

Although she is originally from Kerikeri, Sarah has recently returned to the area from Warkworth.

A busy mum to twin girls, Sarah doesn't have a lot of spare time but loves anything related to the water (especially fishing), watching rugby and relaxing with family and friends.

Safer Systems

Providing accurate documentation is critical to our residents' medical safety. We have recently introduced 1CHART, an electronic medical charting system which improves communication between medical providers, pharmacy and onsite nursing staff.

1CHART is a highly-secure cloud based system that enables approved practitioners to access a patient's notes in real time. It reduces the potential for notes to be misplaced, prevents mistakes that can occur during the rekeying process, and ensures that important information is always legible.

The system also provides a number of safeguards which check that the medication that is being dispensed matches what's on the chart and allows a chart to be accessed 24/7 from any location. This is especially useful when residents need to travel to see a specialist or require hospital care.

1CHART is just another example of how we are embracing technology to provide premium quality care for our residents.

Careerforce Training

BY LESLEY PATON

I am a Senior Caregiver and have been working here at the Village for over 20 years. I have always been keen on education and teaching, which lead me to become a registered Onsite Assessor with Careerforce.

It brings me great joy to see the Caregivers of the village achieve qualifications in the workplace and it's a wonderful feeling to see the pride on their faces when they receive their certificates.

Our carers learn a variety of skills, including:

- Introduction to support work
- Providing personalised care
- The aging process
- Effective communication
- Moving and handling people
- Infection control
- Nutrition and Food Safety
- Continence management



Lesley Paton.

The program provides comprehensive training in all aspects of healthcare and wellbeing and we give lots of support and encouragement to ensure that our caregivers successfully complete all nine modules. Congratulations to Turiti Bonney, Carol Deane, Jill Godfrey, Ngawaina Grace, Mary Harris, Raewyn Melrose, Fred Panapa, Heather Silich, Helen Cumming, Lynette Lewis, Glenys Ramsay and Hannah Thorne who all achieved their qualifications over the past few months.



A Bit Of Hollywood In The Village

Health and Safety in our workplace is an area in which we take pride, ensuring all staff and volunteers understand and are fully trained in the latest standards and legislative requirements. As part of their orientation, newcomers are given a thorough induction which covers everything from a Village tour and manual handling procedures to emergency response to Health & Safety.

Although Health & Safety is an important and complex topic, we wanted to do something to make it fun and engaging and more relevant to aged care and the services we provide. With this in mind we decided to create a training video which was

scripted and produced by Harley Alexander of Creative Cavalry.

Key characters were played by actors from Kerikeri Theatre and by our own caregiving and registered nursing superstars. The project was funded by sponsorship from Laser Electrical Kerikeri and NCS (Nurse Call System).

Our Operational Support Manager, Cheryl Silich, has been discussing this initiative with NZ Aged Care Association, ACC and Worksafe. It is a first for Health & Safety in our sector and we are actively looking to sell and promote this to our industry.

Available Now

COTTAGE 23, THE CLOSE



This 2 bedroom 1 bathroom cottage has single car garaging with a remote activated door. The delightfully modern, open plan home is kept warm in winter and cool in summer with a heat pump. The bathroom is all about comfort and safety with a walk in shower (no ledges to step over), extractor fan, shower and toilet grab rails and a heated towel rail.

SPECIAL FEATURES:

- Spacious, open plan kitchen/dining/lounge
- Modern kitchen with oven, rangehood, hob, dish drawer & an insinkerator
- WC separate to bathroom
- Private patio/garden
- Internal access garage/laundry

Enquiries to be made to Frances Shaw, Village Manager on 09 929 5836

PRICE ON ENQUIRY

A Trip Down Memory Lane

Our residents enjoyed a visit from the Kerikeri Vintage Car Club and were thrilled to take a ride in cars from a familiar era.



Cheers!

Our Village residents enjoyed a pleasant afternoon sampling the local wines at Byrne and Ake Ake vineyards.

Special thanks to Vintners John and Tereza who advised that it had been a bumper grape season and explained more about the growing process and the qualities of the resultant wines.



Look Who Came To Visit

Steph Edwards, who works part time in the Village administration team and also volunteers to help in her down time, runs a bird rescue facility at her home. Periodically, when she has nursed

a wild bird back to health, she brings her 'patient' in to meet the residents before they are released into the wild. Our residents were fascinated by the baby Moreporks Steph has been hand rearing.



Celebrating Nell's 100th Birthday

WRITTEN BY NELL'S SON MICHAEL GROSS



During the weekend of the 14th of January family and friends gathered to celebrate the 100th birthday of original Kerikeri Retirement Village resident Ellen "Nell" Graveson.

Ellen was born on the 14th of January 1917 in a small village, Aspatria, near Carlisle in Northern England. She was the third child and second daughter of Elizabeth and Thomas Graveson. Tom was a skilled engineer/fitter who spent the war years working on the construction of submarines in Newcastle-on-Tyne. Working the midday shift on the 11th of the 11th 1918 he was hit in the face by a stray rivet and lost the sight of his eye. The family moved back to Aspatria and set up a home bakery. A couple of years later Tom secured a position as chauffeur-mechanic to a New Zealander married to an English woman living near Aspatria. They returned to New Zealand in 1922 and Tom accepted employment as their chauffeur. Elizabeth and the three children followed six months later on NZSS Tainui II

and they set up home in Mt Eden Auckland.

Nell attended Mt Eden primary School and, for a short time, Kowhai Intermediate School. In the 1930s Nell (aged 14) supported a school friend at a job interview and ended up being offered the position as a machinist at Stern's Furs. After returning from a trip to Fiji she met and later married her new boss, a charming Vienna born fashion designer.

In 1944, following her divorce, Nell moved back to Auckland from Dunedin with three children (Madeleine, Michael and Peter) to live with her parents.

In 1946 the three generations moved to Darwin Rd in Kerikeri where Tom established a small citrus nursery and became a grower of exotic fruits. Nell worked in the nursery, picked lemons, sewed and undertook other part time jobs to support her family.

In the early 1950s a distant cousin, Jock Graveson, visited his recently discovered relative, Tom Graveson and met his daughter. Marriage followed and Jock, a Te Puke dairy farmer, with Nell, developed the Sunshine Citrus Nursery. This became the largest grower of citrus trees in New Zealand, producing up to tens of thousands of orange, mandarin, grapefruit and lemon trees each year to a booming industry based in Kerikeri, the Bay of Plenty and Gisborne.

Jock's untimely death in 1978 on a post-retirement trip to Europe saw

Nell sell her home and one acre garden in Totara Place, Riverview.

She moved to the newly established Kerikeri Retirement Village, then in a large paddock between Kerikeri Road and Kerikeri High School, as one of its original residents. As a Trustee of her husband's estate, she had, along with the Murray Trust, provided the initial funds to purchase the property on which the village stands.

Until recently Nell has looked after her garden and the neighbouring roadside. For many years she was a stalwart "adopted mother" and helper of the several owners of the Kerikeri Wool Shop. She is a devoted and adored mother to her children, her nine grandchildren, their spouses, and eighteen great grandchildren.



Nell celebrated her 100th birthday over several days with her village friends and, on the day, thirty five family members. She is living a wonderful life surrounded by her village friends.



Shade Sail

Residents have been enjoying the outdoors and escaping the summer heat under our new shade sail over the Village Green. We'd like to thank the students and teachers at Springbank School who fundraised \$400 towards the project.

Electrical Tagging

All electrical appliances need to be tagged to ensure that they are safe and compliant. If you buy or are given an electrical appliance it must be tagged by our maintenance staff and this applies whether you are an apartment or care facility resident but is not required for cottage residents.

Please notify reception of anything that does not have an electrical tag and our maintenance staff will take care of it.

Diary Dates

Coming Soon

Date TBC Cinema Café
Meal Deal: "Whisky Galore"

Community Dinner

Tuesday 4th April | 5.30pm
In the Social Centre \$15

Afternoon Movie

Wednesday 19th April | 2.30pm
In the Social Centre. Free icecream!

Bus Trip To Ngawha

Friday 28th April | 10.00am
Geothermal Power Station. Bus leaves reception 10.00am.

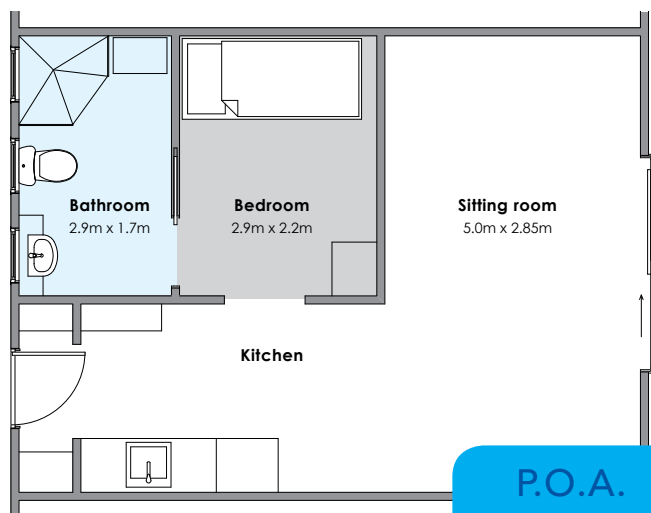
RELAX & ENJOY LIFE!

MODERN, SUNNY APARTMENT



Our modern one bedroom apartments are packed with features including:

- Generous sized north facing lounge and patio
- Modern kitchen and hob
- Slimline fridge freezer
- Heater in bathroom and lounge
- Indoor access to Pavilion Lounge, Laundry and Social Centre
- Wardrobe in bedroom, storage cupboard in bathroom
- Non-slip flooring in bathroom and walk in shower
- Heated towel rail
- Grab rails for toilet and bathroom
- Car parking available



To view contact Frances on 09 407 0070
or email frances@kerikerivillage.co.nz